

ETHEL STARK (MUS 242)

Preliminary Processing Report

Date of Accession : November 1993

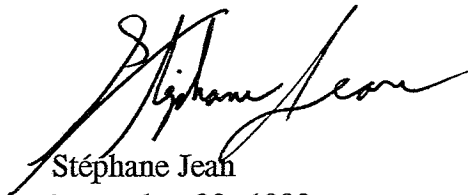
Inclusive Dates : 1924-1993, n.d.

Description : Correspondence; requests; speeches; invitation cards; reports; contracts; concert programmes; periodicals; publicity; press release; letters of congratulations; honours; press clippings; published scores (annotated); Order of Canada; biographical documents; Sonata Series; brochures; poster; photographs; audio discs; audio tape reels.

Duplicates Removed : 2 cm. of concert programmes and publicity.

Dimension : 64 cm. (textual documents), 32 photographs, 4 audio discs, 2 audio tape reels.

Boxing : Dec. 16-20, 1993; 43 folders; 5 boxes (3 upright; 2 flat - small and medium).



Stéphane Jean
December 20, 1993

MUSIC DIVISION - ARCHIVE'S PRELIMINARY PROCESSING FORM
DIVISION DE LA MUSIQUE - BORDEREAU DE TRAITEMENT PRÉLIMINAIRE DES DOCUMENTS D'ARCHIVES

Title of Fonds/Titre du fonds
ETHEL STARK

File Code of the Fonds (Accession Number)/Cote de fonds (Numéro d'acquisition)
MUS 247 (1993-19) Accession November 1993

Box Number/Numéro de boîte
1

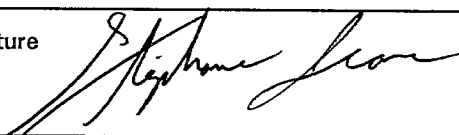
Dimension
20 cm.

Restrictions

Medium/Support

Recorded Sound Audiovisual Machine Readable Photographic Printed
 Enregistrement Sonore Audiovisuel Ordinologie Photographique Imprimé

Paper Other:
 Papier Autre:

Date of/de description Dec. 16, 1993	Signature 	Page 1 of/de 1
--	---	----------------

FOLDER CHEMISE	DESCRIPTION	CM	DATE(S)
1	Speeches.	0.5 cm.	1976, n.d.
2	Requests.	1 cm.	1979-1993
3	Letters of congratulations.	8 items	1979-1984
4	Honours : correspondence; press clippings.	0.5 cm.	1976-1992, n.d.
5	Invitation cards.	6 items	1951-1992
6	Ernest Bloch : correspondence; poems; concert programme; 14 photographs.	0.5 cm.	1950-1956, n.d.
7	Curtis Institute of Music : correspondence (only three originals); 2 photographs.	0.5 cm.	1927-1933
8	Montreal Women's Symphony : publicity; press release.	1 cm.	1947, n.d.
9	Montreal Women's Symphony : concert programmes.	2 cm.	1927-1944
10	Montreal Women's Symphony : concert programmes.	2 cm.	1945-1949
11	Montreal Women's Symphony : concert programmes.	2 cm.	1949-1968, n.d.
12	Concert programmes (includes 1 press clipping).	1.5 cm.	1944-1971, n.d.
13	Contracts.	3 items	1941-1974
14	Montreal Women's Symphony : Letters patent incorporating; report; historical facts about the Montreal Women's Symphony.	4 items	1941-1966, n.d.
15	Reports.	2 items	1962-1981
16	"The Theories of Heinrich Schenker in Perspective", by Sonia Slatin - doctor's degree.	1 item	1967

Ethel STARK (MUS 242)
(1995-47)

Preliminary Processing Report

Date(s) of accession: November 13, 1995

Inclusive dates: ca 1949 - 1960?

Description: Ethel Stark conducting the Tokyo ABC Symphony Orchestra, Women's Symphony, Toronto Symphony, CBC Montreal Chamber Orchestra, Les petits symphonies and others. Ethel Stark violin, with Herbert Ruff and Charles Reiner piano and Les petites symphonies conducted by Roland Leduc.

Dimension: 20 7-inch audio tape reels, 3 10-inch audio tape reels

Boxing: Put in cage on 3M January 18, 1996



January 17, 1996



MUSIC DIVISION - ARCHIVE'S PRELIMINARY PROCESSING FORM

DIVISION DE LA MUSIQUE - BORDEREAU DE TRAITEMENT PRÉLIMINAIRE DES DOCUMENTS D'ARCHIVES

Title of Fonds/Titre du fonds

Ethel Stark

File Code of the Fonds (Accession Number)/Cote de fonds (Numéro d'acquisition)

MUS 242 (1995-47)

Box Number/Numéro de boîte

Dimension

Restrictions

Medium/Support

Recorded Sound, Audiovisual, Machine Readable, Photographic, Printed

Paper, Other: / Papier, Autre:

Table with 3 columns: Date of/de description, Signature, Page 1 of/de 1

Main table with 4 columns: FOLDER CHEMISE, DESCRIPTION, CM, DATE(S)

National Library of Canada / Music Division
Bibliothèque nationale du Canada / Division de la musique

Dub no./No de repiquage

DUB-CD 90

DUB-T10 354

Fonds:

Ethel Stark

Fonds no./No du fonds:

MUS 242

Performer(s)/Artiste(s):

Ethel Stark - violinist

Herbert Ruff - piano

Contents/Contenu:

Sonata in G Minor (Tartini): Adagio (4:15), Non Troppo Presto (1:45), Adagio (Largo),
Allegro comodo (5:00)

Sonata in E (Paul Hindemith) (10:25): Rubig bewegt (?), Langsam, Sehr lebhaft

Impressions (Joseph Achron) (2:25)

Prelude Op. 34 No.24 (Shostokovich) (1:15)

Allegro (Fiocco) (2: 45)

Dub no./No de repiquage

DUB-CD 90

DUB-T10 354

Fonds:

Ethel Stark

Fonds no./No du fonds:

MUS 242

Performer(s)/Artiste(s):

Ethel Stark - violin

Charles reiner - piano

Contents/Contenu:

Sonata in D Major, op. 94 (Prokofieff): Moderato (8:00), Presto (3:45), Andante (3:00),
Allegro con Brio (6:45)

Sicilienne (Paradis - Dushkin) (2:40)

Dub no./No de repiquage

DUB-CD 91

DUB-T10 355

Fonds:

Ethel Stark

Fonds no./No du fonds:

MUS 242

Performer(s)/Artiste(s):

Ethel Stark - violin

Les Petites Symphonies

Roland Leduc - conductor

Composer/Compositeur:

Samuel Barber

Collective title/Titre collectif:

Violin Concerto

Juillet 94

**Non Commercial Recordings
Template Codes**

SQsequence number
FN ...fonds number
CNcollection name
INitem accession number
ODorganization date
CPcopyright info
RDrecording date
CIcircumstance of recording
BD ...broadcast date
PFperformers
TIcollective title
COcomposer
CT ...contents
NSnumber of sides
DRduration time
NB ...other information
CRcarrier
MT ...material
SZsize
SPplayback speed
PM ...playback mode mono/streo/quad/etc
TCtrack configuration
DRreel dub number
DDDAT dub number
DCcassette dub number
NCconservation notes
\$

Ethel Stark Fonds - MUS 242
Recorded Sound

FN MUS 242
CN Ethel Stark
IN D16-164-165
OD June, 1994
RD 8-2-1946
CI Montreal (15024A--15025A--15024B--15025B)
TI Simpson's Pop Concert Hour
NS 4
DR 2--2--2--2
NB John De B. Payne
CR Acetate Disc (16)

\$

FN MUS 242
CN Ethel Stark
IN D16-166-167
OD June, 1994
RD December 11, 1955
CI Aircheck (18215--5985--5986)
TI Les Petites Symphonies
NS 2
CR Acetate Disc (16)

\$

FN MUS 242
CN Ethel Stark
IN F-16
OD June, 1994
PF Ethel Stark
CT Ethel conducting
NS 1
DR 2:10
NB 16 mm (??? & Sound)
CR Film Reel

\$

FN MUS 242
CN Ethel Stark
IN T7-513
OD June, 1994
CT Violin and piano
NS 1
NB Tape brittle and damaged in some places

Lev of Control:									Accession
MUS #:									242
Accession # :									1995-47
Container #	Access Code	Cont Type	Media	Room	Row	Bay	Shelf	Content summary	
12	90	BF07	Textual	3M East	21	1	2	Photocopies of photographs, with identifying information added in ink by the donor.	

Picture to date
to identify

After a sonata program over
C.B.C. as violinist, from Montreal
1957



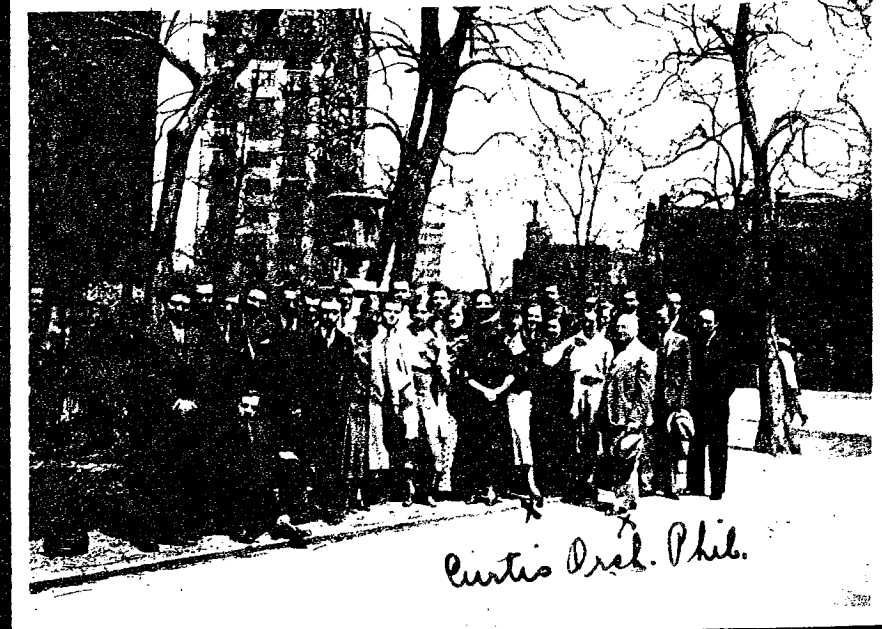


This is the committee of
 the Montreal Women's Symphony.
 Picture taken at reception
 after concert. 1945?

my sister
 Dorella Stark
 manager
 M.W.S.O.

my sister
 Dorella Stark
 Mrs. Helen
 Brockman
 Mrs. Harry
 Bower
 President
 M.W.S.O.
 Ethel
 Bunker
 M.W.S.O.

Dorothy Pratt, Vice-President



1.

2.

3.

In Maine, Left to Right
Eugene Helmer, pianist
Celia Gomborg violinist
Lea Lubovutz
Ethel - violinist
James Bloom violinist.

2. Curtis Symphony Orch.
Rittenhouse Square, Phila

3. Mrs. Josef Hofmann &
Lea Lubovutz, Maine

4. Lubovutz in Maine at her
home in Rockport, Maine

5. Group of students from
Curtis Institute

6. Henry Seigl with, Case,
concert master of Seattle
Symphony.

7. Ethel & James in Maine

4

5

6

7



1. Lubovitz & Ethel in Maine
2. Lubovitz & daughter Irene
3. Ethel & Lubovitz in Maine
4. Ethel as a young violin student
5. not clear, cannot identify
6. Edwin Bachman - famous violin pedagogue and Mme. Lubovitz, Phila
7. Ethel in Maine
8. Ethel as a young violin student.

4.

5.

6.

7.

8.

1.



2.

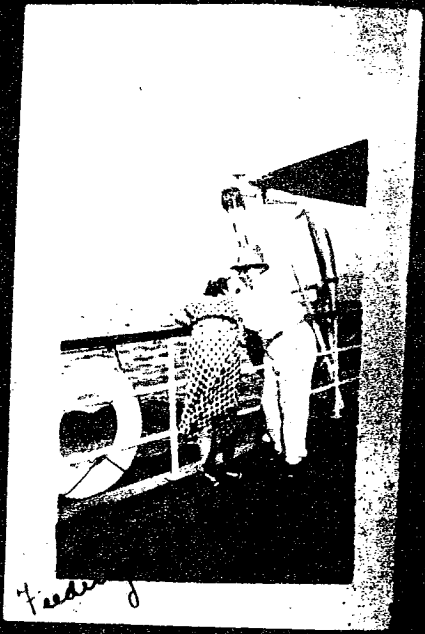


3.



Father & Son

4.



Feder

1. Ethel in Rockport, Maine

2. Josef Hofmann

3. Hofmann & Son Anton

4. Ethel & Hofmann

5. Colleagues of Ethel's

6. " " "

7. Mr. & Mrs. Josef Hofmann

(On the yacht of Mrs. Zumbalest.) 1932

5.



6.



7.



Mr & Mrs Jos. Hofmann

In Rockport, Maine
Ethel & Lubowitz

Lubowitz & Ethel



Has the best burnt ?



Ethel in
Rockport

A group of colleagues
on the steps of the
Curtis Institute, Philadelphia

Ethel Stark
at
Rockport, Maine



James Bloom



At Rockport, Maine, (Artist Colony)
James Bloom, Celso Gombosi,
Lea Luboshutz & Ethel Stark
all violin students of Luboshutz - 1934



my violin professor at Curtis Institute
Lea Luboshutz
&
Ethel Stark
at
Rockport, Maine, 1934

Irene, daughter of
Lea Lubshutz in
Rockport, Maine



Mrs. Joseph Hoffmann



Joseph Hoffmann
The Great virtuoso pianist



On the Yacht of
Mrs Curtis Bok ^{of} _{Philadelphia} ^{at} _{Rockport}
1933



tired after climbing so many stairs

1. Colleagues at Curtis Institute,
2. Ethel in Carmel by the ^{Seaside} Sea
California
1932?
3. Ethel with colleagues in Calif
4. Ethel on James' shoulders
Rockport, Maine
1933?
5. Ethel on Beach at
Carmel by the Sea 1932
6. Cannot identify (picture not clear)
7. My niece Devora Stark now
Mrs. Jerome Wyman
8. Irene Lubolutz housekeeping
in Carmel by the Sea, Calif.

11

2

3

4

5

Lea Lubovitch
on Mrs. Zimbalist's yacht
1933



Ethel
with Mrs. J. Yacht
James Bloom
1933



The greatest concert pianist
of his day.
Josef Hoffmann
Camden, Maine
1930



Mrs. Josef Hoffmann
Felix Salmond, the renowned
English cellist, Lea Lubovitch



Ethel with Indian Chief
and Colleagues at
Indian Reserve, Montreal
1940



Anton Hoffmann,
son of Josef
1932

In a tower with my
colleagues in California
1930



California

Celia James

Deborah
Ethel



A group of friends
by sea on the coast
1930



what a dance team!

Ethel in
Carmel - by the Sea, California
1930



In an orange grove California



My niece
DAVIDA WYMAN



1947

After concert with The Town's Symphony
& conductor in 1947. The famous
pianist YSELE ROSEBLAT is on my
right, my brother Julius, my sister
Doretta, my Mother Laura and me



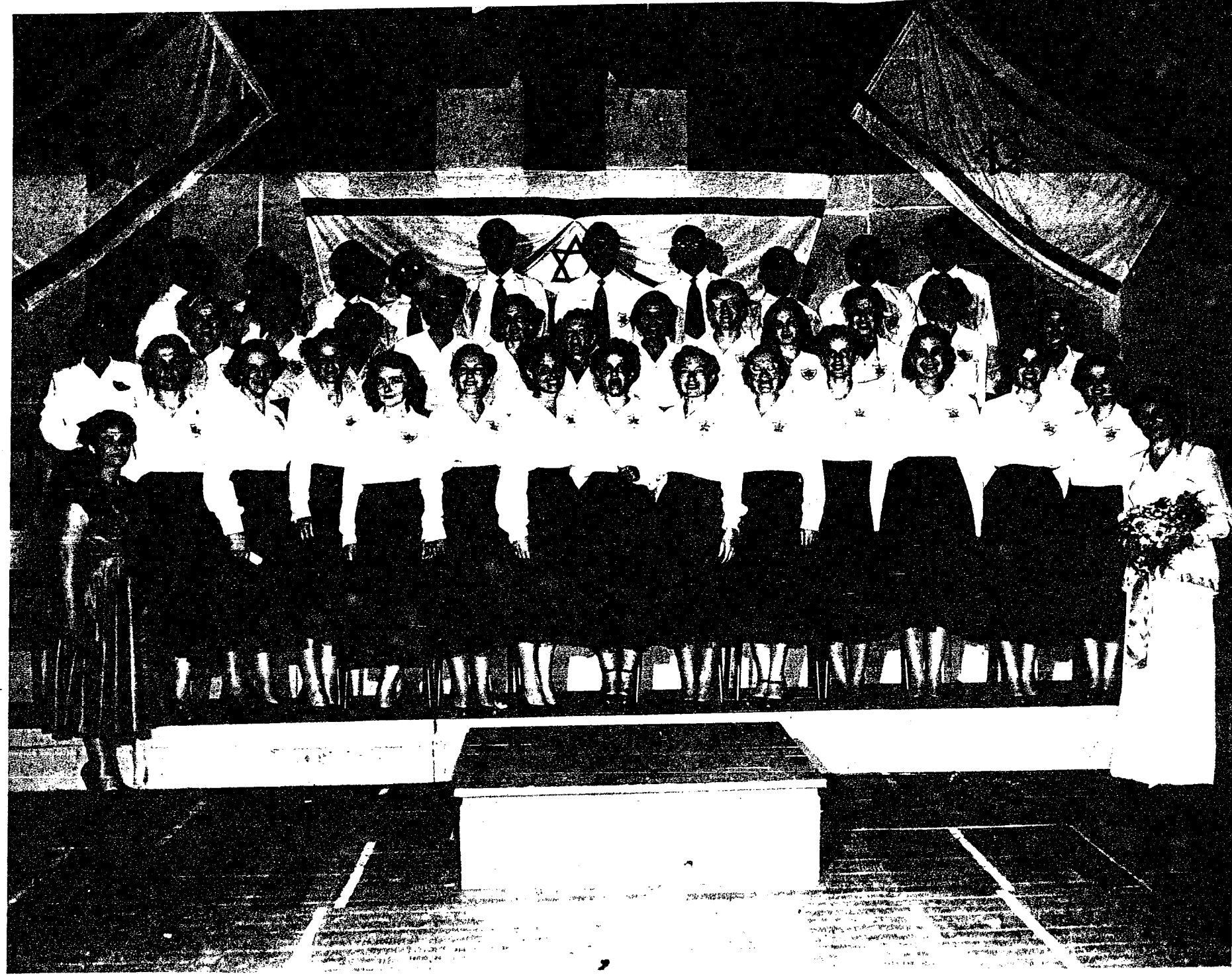
A group of students
in Maine



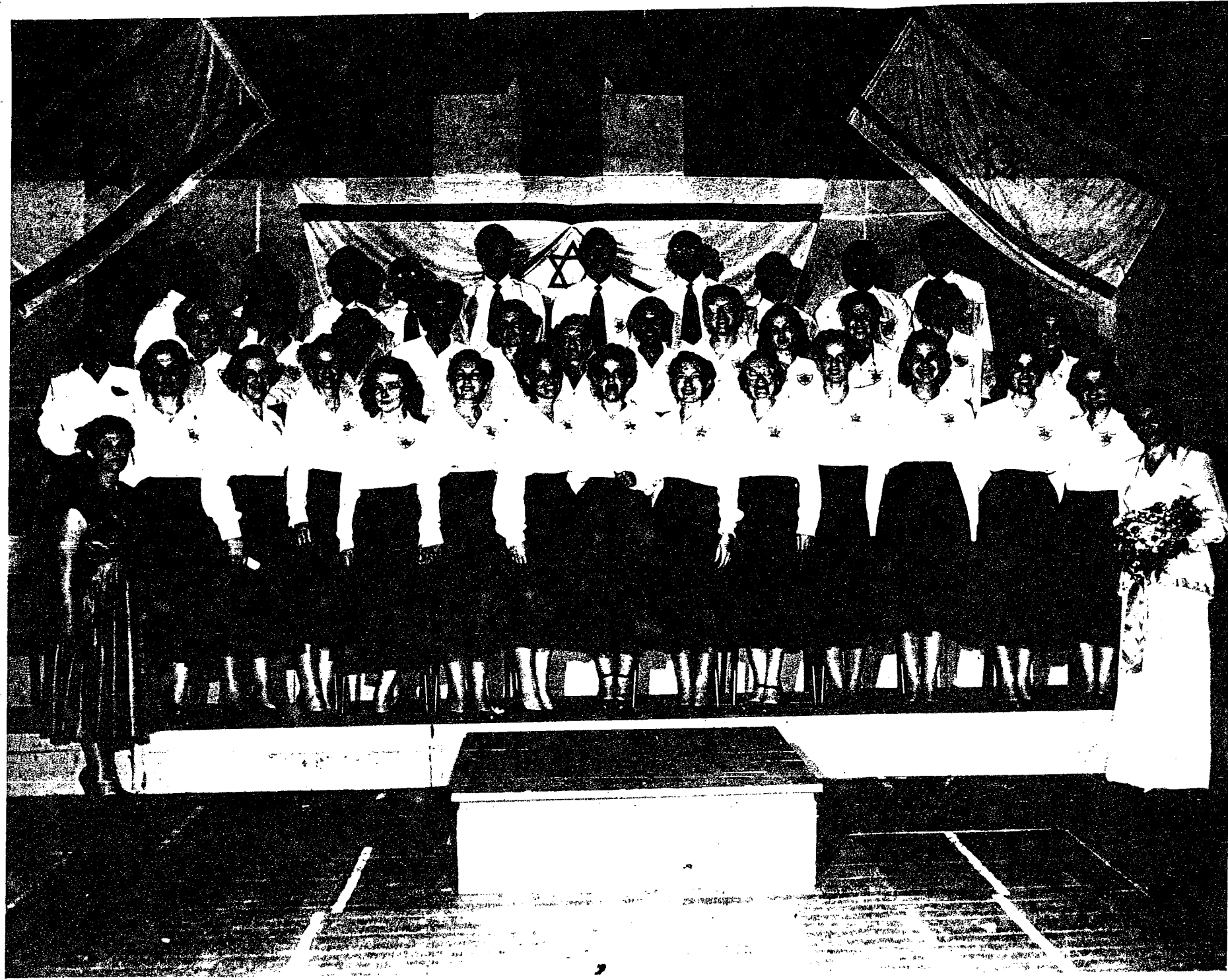
The New York Women's Symphonietta
Ettel Stask, musical director
and conductor.
New York City 1938



The New York Women's Chamber Orchestra 1938
Ettel Stark, Conductor



The Canadian Choir in concert at the Montreal Forum
before leaving for Israel to participate in the Song
Festival (Zimra) 1952. Ethel Stark, Conductor
Doris L. Lattin, pianist. Soloists: R. Rouleau, Bass
S. P. Jeannotte, Tenor
Edward Woolley - Tenor
Martha LeTourneau,
Soprano



The Canadian Choir in concert at the Montreal Forum
before leaving for Israel to participate in The Song
Festival (Zimra) 1952. Ethel Stark, Conductor
Denia Slatin, pianist. Soloists: R. Rouleau, Bass
J. P. Jeanotte, Tenor
Edward Woolley, Tenor
Martha LeTourneau,
Soprano



The Ethel Stark Synchronetta

Ethel Stark, Conductor

Jean Paul Jeannotte - Tenor

Robert Lavoie - Baritone

Marek Luminale - Chorus Director

Chorus - Disciple de Massenet?

1957?

CONCERT

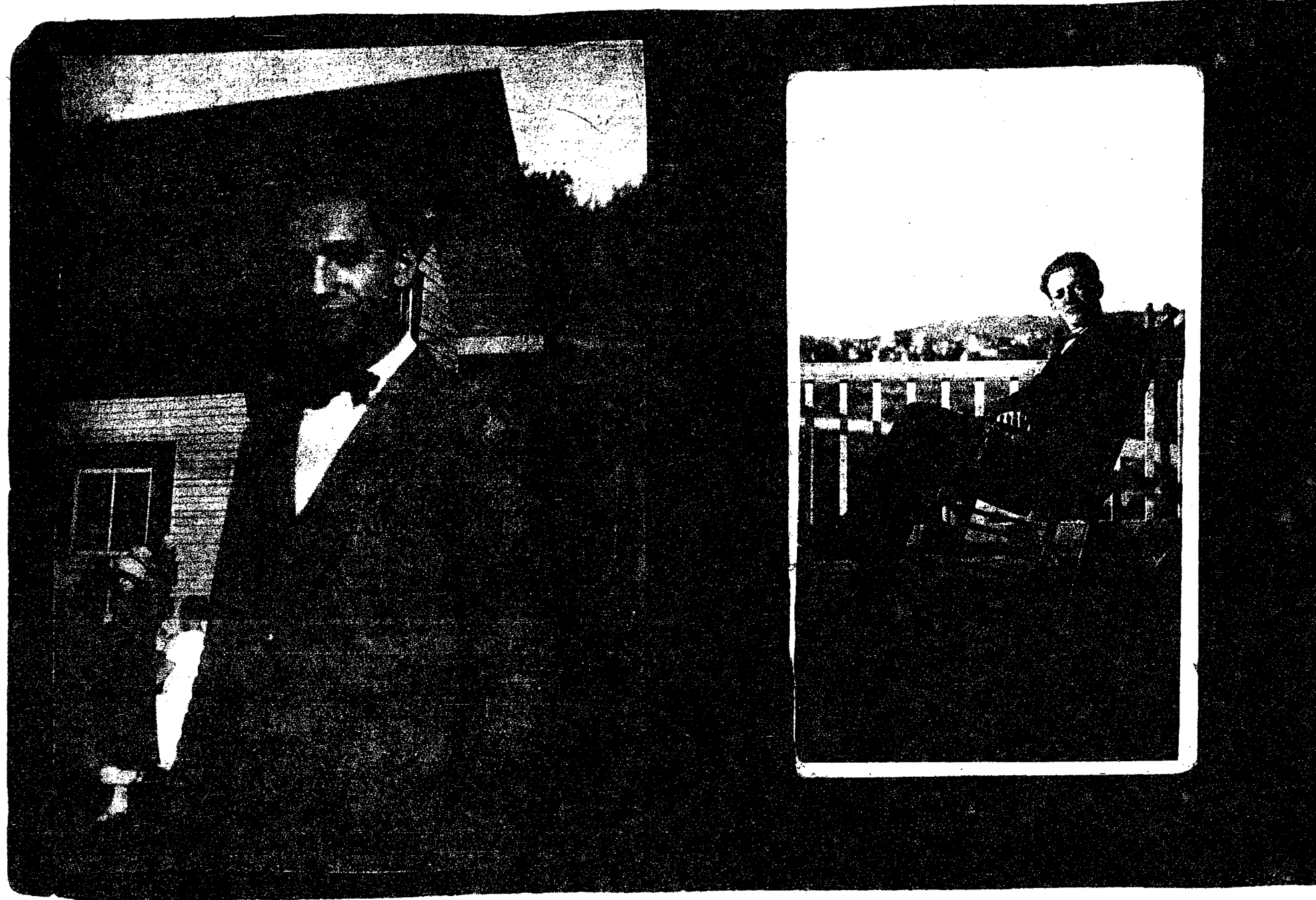
MONTREAL Festivals



Ethel Stark, violinist
Edmund Treidel, Conductor
Soloist with the
C.B.C. Symphony Orch.
1939?

Soloist in Bruch
Concerto in Sol mineur

My brother:-
Julius Starke (Jules)



my brother
Julius Starke

ETHEL STARK FONDS (MUS 242)

Preliminary Processing Report

Date of Accession : November 13, 1995

Inclusive Dates : 1927-1995, n.d.

Description : Biographical documents; correspondence; published scores (annotated) with manuscript copies; autograph manuscripts of compositions by Violet Archer and Hector Gratton; lectures; Montreal Women's Symphony Orchestra (certificate of registration and contract); diploma; certificate; brochures, invitation card; news release; press clippings; drawings; photographs; audio tape reels.

Documents Transferred : 11 cm. of published scores.

Dimension : 1.07 m of textual records. — 3 drawings. — 130 photographs. — 20 audio tape reels.

Boxing : January 5, 8 - 10, 1996. — 70 folders. — 10 boxes (5 upright; 5 flat - small and medium).

Conservation : Certificate, diploma, drawing and photographs to be unrolled. Many photographs are glued.

Stéphane Jean
January 10, 1996



MUSIC DIVISION - ARCHIVE'S PRELIMINARY PROCESSING FORM
DIVISION DE LA MUSIQUE - BORDEREAU DE TRAITEMENT PRÉLIMINAIRE DES DOCUMENTS
D'ARCHIVES

Title of Fonds/Titre du fonds

ETHEL STARK

File Code of the Fonds (Accession Number)/Cote de fonds (Numéro d'acquisition)

MUS 242 (1995-47)

Box Number/Numéro de boîte

1

Dimension

20 cm.

Restrictions

Medium/Support

Recorded Sound Audiovisual Machine Readable Photographic
 Enregistrement Sonore Audiovisuel Ordinolingue Photographique

Paper
 Papier

Other:
Autre:

Date of/de description Jan. 5, 1996	Signature	Page 1 of/de 1
---	-----------	----------------

FOLDER CHEMISE	DESCRIPTION	CM	DATE(S)
	VIOLIN MUSIC		
1	Published scores (annotated): <i>Folies d'Espagne</i> (Corelli); <i>Twelve Sonatas</i> (Corelli); <i>Six Sonatas</i> (Handel); <i>Sonata in G minor</i> (Tartini); <i>Célèbres sonates</i> (Tartini); <i>Ciaccona</i> (Vitali).	2 cm.	c1919-c1953, n.d.
2	Published scores (annotated): <i>Sonata in A major</i> (Vivaldi); <i>Sonata en D major</i> (Vivaldi); <i>Six Sonatas</i> (Bach); <i>Six Sonatas</i> (Bach); <i>Chaconne</i> (Bach).	2 cm.	c1917-c1948, n.d.
3	Published scores (annotated): <i>Sonatas</i> (Bach); <i>Sonatas</i> (Mozart); <i>Eighteen Sonatas</i> (Mozart).	2 cm.	c1900-c1934, n.d.
4	Published scores (annotated): <i>Eighteen Sonatas</i> (Mozart); <i>Sonatas</i> (Beethoven).	2 cm.	c1911-c1934, n.d.
5	Published scores (annotated): <i>Sonatas</i> (Brahms); <i>Sonata</i> (Joseph Marx).	2 cm.	c1914-c1948
6	Published scores (annotated): <i>Three Sonatinas</i> (Schubert); <i>Sonata</i> (Schumann); <i>Sonata</i> (Fauré); <i>Sonata</i> (Franck).	2 cm.	c1908-c1918, n.d.
7	Published scores (annotated): <i>Sonata in E</i> (Hindemith); <i>Sonata in Si minore</i> ; (Respighi); <i>Sonata</i> (Bloch); <i>Sonata No. 12</i> (Paganini); <i>Sonatas</i> (Prokofieff).	2 cm.	c1919-c1954, n.d.



MUSIC DIVISION - ARCHIVE'S PRELIMINARY PROCESSING FORM
DIVISION DE LA MUSIQUE - BORDEREAU DE TRAITEMENT PRÉLIMINAIRE DES DOCUMENTS
D'ARCHIVES

Title of Fonds/Titre du fonds

ETHEL STARK

File Code of the Fonds (Accession Number)/Cote de fonds (Numéro d'acquisition)

MUS 242 (1995-47)

11	Published scores (annotated): <i>Concerto in D Major</i> (Paganini); <i>Concerto in D major</i> (Prokofieff); <i>Concerto</i> (Bruch); <i>Concerto</i> (Tschaikowsky); <i>Concerto Accademico</i> (Williams).	2 cm.	c1906-c1921, n.d.
12	Published scores (annotated): <i>Concerto Gregoriano</i> (Respighi); <i>Première suite</i> (Achron); <i>Suite</i> (Sinding); <i>From the Native Country</i> (Smetana); <i>Concerto in D minor</i> (Bach); <i>Concerto</i> (Bach); <i>Concerto</i> (Brahms).	2 cm.	c1906-c1925, n.d.
13	Published scores (annotated): <i>Tarantella</i> (Saint-Saëns); <i>Romance</i> (Beethoven); <i>Poème</i> (Chausson); <i>Fantaisie caprice</i> (Vieuxtemps); <i>Rondo capriccioso</i> (Saint-Saëns); <i>Capriccio - valse</i> (Wieniawski); Concert transcriptions (Auer); <i>Impressions</i> (Achron); <i>Puck</i> (Achron); <i>Grave</i> (Kreisler).	2 cm.	c1897-c1926, n.d.
14	Published scores (annotated) and manuscript copy: <i>Prelude in E major</i> (Bach); <i>Gavotte in E major</i> (Bach); <i>Arioso</i> (Bach); <i>Roumanian National Dances</i> (Bartok); <i>Jamaican Rumba</i> (Benjamin); <i>Contra-Dances</i> (Beethoven); <i>Abodah</i> (Bloch); <i>Baal Shem</i> (Bloch); <i>Vidui</i> (Bloch); <i>Simchas Torah</i> (Bloch); <i>Cradle-Song</i> (Brahms); <i>Hungarian dances</i> (Brahms); <i>Waltz in A major</i> (Brahms); <i>Ghost Dance</i> (Burleigh); <i>Spanish Serenade</i> (Chaminade - Kreisler).	2 cm.	c1913-c1944, n.d.
15	Published scores (annotated) and manuscript copy: <i>Hebräische Melodie</i> (Achron); <i>Scherzo - Valse</i> (Chabrier); <i>Nocturnes</i> (Chopin); <i>Waltz and Celebration</i> (Copland); <i>Hora Staccato</i> (Dinicu - Heifetz); <i>Scherzo</i> (Kreisler); <i>Slavonic Dances</i> (Dvorak); <i>Étincelles</i> (Dont); <i>Caprice</i> (Dont); <i>La capricieuse</i> (Elgar); <i>Berceuse</i> (Fauré); <i>Seven Pieces</i> (Fiocco); <i>Siciliano & Rigaudon</i> (Francoeur - Kreisler); <i>Thirty Moods and Scenes</i> (Godowsky - Press).	2 cm.	c1909-c1950, n.d.
16	Published scores (annotated) and manuscript copy: <i>Waltz</i> (Glazounov); <i>Grand adagio</i> (Glazounov); <i>Flower-life</i> (Hubay); <i>Trois morceaux</i> (Haydn); <i>Vouchsafe O Lord</i> (Handel); <i>Improvisation</i> (Kabalevsky); <i>Sabre Dance</i> (Khachaturian); <i>Nocturne</i> (Khachaturian); <i>Notturmo & Tarantella</i> (Szymanowski); <i>Chanson Palestinienne</i> (Kirma); <i>Danse orientale</i> (Rimsky-Korsakoff); <i>Caprice - Snowflakes</i> (Rimsky-Korsakoff).	2 cm.	c1911-c1945, n.d.

Date of/de description Jan. 8, 1995	Signature	Page 2 of/de 2
--	-----------	----------------

FOLDER CHEMISE	DESCRIPTION	CM	DATE(S)
----------------	-------------	----	---------

Box Number/Numéro de boîte

2

Dimension

20 cm.

Restrictions

Medium/Support

Recorded Sound Audiovisual Machine Readable Photographic
 Enregistrement Sonore Audiovisuel Ordinalingue Photographique

Paper Other:
 Papier Autre:

17	Published scores (annotated) and manuscript copy: <i>The Flight of the Bumble-Bee</i> (Rimsky-Korsakov); <i>Étude-Caprice</i> (Kreutzer - Kaufman); <i>Hungarian Dance</i> (Kreisler); <i>Recitativo Und Scherzo-Caprice</i> (Kreisler); <i>Frasquita</i> (Kreisler); <i>Canzona</i> (Medtner); <i>Danza</i> (Medtner); <i>Hopak</i> (Moussorgsky); <i>Rondo</i> (Kreisler); <i>Perpetuum Mobile</i> (Novacek); <i>Moto Perpetuo</i> (Paganini); <i>Caprice XVI</i> (Paganini); <i>Caprice XXIV</i> (Kreisler); <i>Sicilienne</i> (Paradis); <i>Tre Giorni</i> (Pergolese); <i>A Birdling Sings</i> (Perlman); <i>Kol Nidre</i> (Pilzer); <i>Gavotta</i> (Prokofieff); <i>Minute-Caprice</i> (Rode - Thibaud).	2 cm.	c1900-c1937
18	Published scores (annotated) and manuscript copy: <i>Gipsy Airs</i> (Sarasate); <i>Bagatelle</i> (Scarlatescu); <i>Ave Maria</i> (Schubert - Wilhelmj); <i>Ballet Music from «Rosamunde»</i> (Schubert); <i>4 Preludes</i> (Shostakovitch); <i>Fugue</i> (Tartini - Kreisler); <i>Valse</i> (Tschaikowsky); <i>Andante Cantabile</i> (Tschaikowsky); <i>Gypsy Serenade</i> (Valdez); <i>Adagio</i> (Vivaldi); <i>Caprices</i> (Paganini).	2 cm.	c1895-c1937, n.d.
19	Published scores (annotated): <i>Shifting the Position and Preparatory Scale-Studies for the Violin</i> (Sevcik); <i>School of Technic for Violin</i> (Sevcik); <i>The School of Violin-Technics</i> (Sevcik); <i>Caprices</i> (Rovelli); <i>Caprices</i> (Rode); <i>Caprices</i> (Fiorillo).	2 cm.	c1895-c1933, n.d.
20	Published scores (annotated): <i>Caprices</i> (Kreutzer); <i>Twelve Concert Etudes</i> (Meiff); <i>Les vingt-quatre matinées</i> (Gaviniés).	1 cm.	c1929, n.d.



MUSIC DIVISION - ARCHIVE'S PRELIMINARY PROCESSING FORM
DIVISION DE LA MUSIQUE - BORDEREAU DE TRAITEMENT PRÉLIMINAIRE DES DOCUMENTS
D'ARCHIVES

Title of Fonds/Titre du fonds

ETHEL STARK

File Code of the Fonds (Accession Number)/Cote de fonds (Numéro d'acquisition)

MUS 242 (1995-47)

Box Number/Numéro de boîte

3

Dimension

20 cm.

Restrictions

Medium/Support

Recorded Sound Audiovisual Machine Readable Photographic
 ___ Enregistrement Sonore ___ Audiovisuel ___ Ordinolingue ___ Photographique

Paper Other:
 Papier ___ Autre: _____

	MUSIC FOR ORCHESTRA		
21	Published scores (annotated): <i>Ouverture</i> (Bach); <i>Brandenburg Concerto No. 5</i> (Bach); <i>Sarabanda, Giga e Badinerie</i> (Corelli); <i>Concerto Grosso No. II</i> (Bloch).	1 cm.	c1953, n.d.

Date of/de description Jan. 8, 1995	Signature	Page 1 of/de 1
--	-----------	----------------

FOLDER CHEMISE	DESCRIPTION	CM	DATE(S)
22	Published scores (annotated): <i>Adagio and Fugue</i> (Mozart); <i>Toccata, Aria, Minuetto, Giga</i> (Scarlatti); <i>Passacaglia</i> (Frescobaldi); <i>Opera Overtures</i> (misc.); <i>The Rite of Spring</i> (Stravinsky).	2 cm.	c1925-c1952, n.d.
23	Published scores (annotated): <i>Scheherazade</i> (Rimsky-Korsakov); <i>Hampton Miniature Arrow Scores</i> (misc.); <i>Transfigures Night</i> (Schoenberg).	2 cm.	c1941-c1943
24	Published scores (annotated): <i>Nocturnes</i> (Debussy); <i>La mer</i> (Debussy); <i>Ouverture</i> (Handel).	2 cm.	c1937, n.d.

Date of/de description Jan. 9, 1995	Signature	Page 1 of/de 1
--	-----------	----------------

FOLDER CHEMISE	DESCRIPTION	CM	DATE(S)
33	Published scores (annotated): <i>Symphony No. IV</i> (Tschaikowsky); <i>Fingal's Cave</i> (Mendelssohn); <i>Symphony No. 1</i> (Beethoven).	2 cm.	n.d.
34	Published scores (annotated): <i>Symphony No. IV</i> (Tschaikowsky); <i>Magnificat</i> (Bach).	2 cm.	n.d.
35	Published scores (annotated): <i>Symphony No. 101</i> (Haydn); <i>Symphony No. 6</i> (Haydn); <i>Symphony No. 102</i> (Haydn); <i>American Salute</i> (M. Gould).	2 cm.	c1947, n.d.

Paper _____
 Other: _____
 Papier _____
 Autre: _____

36	Published scores (annotated): <i>Petrushka</i> (Stravinsky); <i>Night on the Bare Mountain</i> (Musorgsky).	2 cm.	c1967, n.d.
37	Published scores (annotated): <i>Symphony No. 1</i> (Shostakovich); <i>Roumanian Rhapsody No. 1</i> (Enesco).	2 cm.	c1946, n.d.
38	Published scores (annotated): <i>Symphony No. 35</i> (Mozart); <i>Symphony No. 40</i> (Mozart); <i>Symphony No. 4</i> (Mendelssohn); Introduction to the opera « <i>Khovanshtina</i> » (Musorgsky).	2 cm.	c1944, n.d.
39	Published scores (annotated): <i>Afternoon of a Faun</i> (Debussy); <i>Academic Festival Overture</i> (Brahms); <i>L'Arlésienne, suite No. 2</i> (Bizet); <i>Kaiser Waltz</i> (J. Strauss).	2 cm.	n.d.
40	Published scores (annotated): <i>The Swan of Tuonela</i> (Sibelius); <i>Finlandia</i> (Sibelius); <i>Dance of the Buffons</i> (Rimsky-Korsakoff); <i>La création du Monde</i> (Darius Milhaud); <i>Romeo and Juliet</i> (Tschaikowsky).	2 cm.	n.d.
	MUSIC - MISC.		
41	Published scores (annotated): <i>The Queen of Spades</i> (Tschaikowsky); <i>Missa Luba</i> (arranged by Haazen).	2 cm.	c1964, n.d.
42	Published scores (annotated): <i>Quintet</i> (Mozart); <i>Capriol</i> (Warlock); <i>Quartet No. 1</i> (Mendelssohn); <i>Mass in G</i> (Schubert).	1.5 cm.	c1943-c1954, n.d.
43	Published score (annotated): <i>Anthology of Musical Examples for Instrumental Conducting</i> (Noyes).	1 item	c1961



MUSIC DIVISION - ARCHIVE'S PRELIMINARY PROCESSING FORM
DIVISION DE LA MUSIQUE - BORDEREAU DE TRAITEMENT PRÉLIMINAIRE DES DOCUMENTS
D'ARCHIVES

Title of Fonds/Titre du fonds

ETHEL STARK

File Code of the Fonds (Accession Number)/Cote de fonds (Numéro d'acquisition)

MUS 242 (1995-47)

Box Number/Numéro de boîte

5

Dimension

20 cm.

Restrictions

Medium/Support

Recorded Sound

 Enregistrement Sonore

Audiovisual

 Audiovisuel

Machine Readable

 Ordinalingue

Photographic

 Photographique

Paper

 Papier

Other:

Autre:

39	Published scores (annotated): <i>Afternoon of a Faun</i> (Debussy); <i>Academic Festival Overture</i> (Brahms); <i>L'Arlésienne, suite No. 2</i> (Bizet); <i>Kaiser Waltz</i> (J. Strauss).	2 cm.	n.d.
40	Published scores (annotated): <i>The Swan of Tuonela</i> (Sibelius); <i>Finlandia</i> (Sibelius); <i>Dance of the Buffons</i> (Rimsky-Korsakoff); <i>La création du Monde</i> (Darius Milhaud); <i>Romeo and Juliet</i> (Tschaikowsky).	2 cm.	n.d.
	MUSIC - MISC.		
41	Published scores (annotated): <i>The Queen of Spades</i> (Tschaikowsky); <i>Missa Luba</i> (arranged by Haazen).	2 cm.	c1964, n.d.
42	Published scores (annotated): <i>Quintet</i> (Mozart); <i>Capriol</i> (Warlock); <i>Quartet No. 1</i> (Mendelssohn); <i>Mass in G</i> (Schubert).	1.5 cm.	c1943-c1954, n.d.
43	Published score (annotated): <i>Anthology of Musical Examples for Instrumental Conducting</i> (Noyes).	1 item	c1961

Date of/de description Jan. 9, 1995	Signature	Page 1 of/de 1
---	-----------	----------------

FOLDER CHEMISE	DESCRIPTION	CM	DATE(S)
-------------------	-------------	----	---------



MUSIC DIVISION - ARCHIVE'S PRELIMINARY PROCESSING FORM
DIVISION DE LA MUSIQUE - BORDEREAU DE TRAITEMENT PRÉLIMINAIRE DES DOCUMENTS
D'ARCHIVES

Title of Fonds/Titre du fonds

ETHEL STARK

File Code of the Fonds (Accession Number)/Cote de fonds (Numéro d'acquisition)

MUS 242 (1995-47)

Box Number/Numéro de boîte

6

Dimension

6 cm.

Restrictions

Medium/Support

Recorded Sound
Enregistrement Sonore

Audiovisual
Audiovisuel

Machine Readable
Ordinolingue

Photographic
Photographique

Table with 4 columns: Item Number, Description, Quantity, and Date. Row 1: 44, Correspondence, 8 items, 1929-1995, n.d. Row 2: 45, Lectures, 2 cm., n.d. Row 3: 46, Montreal Women's Symphony Orchestra : certificate of registration and contract. 2 items, 1940-1941. Row 4: 47, Press clippings, 4 items, 1995, n.d. Row 5: 48, Membership of the Order of Canada, 1 item, 1992. Row 6: 49, Biographical documents, 2 items, c1955, n.d. Row 7: 50, News release, 1 item, 1980. Row 8: 51, Invitation card, 1 item, 1995. Row 9: 52, Brochures, 2 items, 1951-1980. Row 10: 53, Caricature by Lou Seligson, 1 item, ca 1992.



MUSIC DIVISION - ARCHIVE'S PRELIMINARY PROCESSING FORM
DIVISION DE LA MUSIQUE - BORDEREAU DE TRAITEMENT PRÉLIMINAIRE DES DOCUMENTS
D'ARCHIVES

Title of Fonds/Titre du fonds

ETHEL STARK

File Code of the Fonds (Accession Number)/Cote de fonds (Numéro d'acquisition)

MUS 242 (1995-47)

Box Number/Numéro de boîte

7

Dimension

6 cm.

Restrictions

Medium/Support

Recorded Sound Audiovisual Machine Readable Photographic
 ___ Enregistrement Sonore ___ Audiovisuel ___ Ordinolingue ___ Photographique

Paper Other:
 Papier ___ Autre: _____

Date of/de description Jan. 9, 1995	Signature	Page 1 of/de 1
--	-----------	----------------

FOLDER CHEMISE	DESCRIPTION	CM	DATE(S)
57	Published scores (annotated): <i>Concerto</i> (Sibelius); <i>Chants d'Espagne</i> (Nin - Kochansky); <i>Saudades Do Brazil</i> (Milhaud); <i>Drei Nachtgesänge</i> (Medtner); <i>Polichinelle</i> (Kreisler); <i>Zephyr</i> (Hubay); <i>Melodie</i> (Gluck); <i>Spanish Dance</i> (Granados); <i>Suite populaire Espagnole</i> (de Falla); <i>En bateau</i> (Debussy); <i>La précieuse</i> (Couperin).	2 cm.	c1905-c1925, n.d.
58	Published scores (annotated) and manuscript copies: <i>Concerto</i> (Vivaldi); <i>Siciliano and Allegro</i> (Arne - Craxton); <i>Rondo</i> (Bach); <i>Romance</i> (Gliere); <i>Habanera</i> (Ravel); <i>Bagatelle</i> (Scarlatescu); <i>Bowing Exercises</i> (Sevcik).	1.5 cm.	c1901-c1926, n.d.



MUSIC DIVISION - ARCHIVE'S PRELIMINARY PROCESSING FORM
DIVISION DE LA MUSIQUE - BORDEREAU DE TRAITEMENT PRÉLIMINAIRE DES DOCUMENTS
D'ARCHIVES

Title of Fonds/Titre du fonds

ETHEL STARK

File Code of the Fonds (Accession Number)/Cote de fonds (Numéro d'acquisition)

MUS 242 (1995-47)

Box Number/Numéro de boîte

8

Dimension

6 cm.

Restrictions

Medium/Support

Recorded Sound Audiovisual Machine Readable Photographic
Enregistrement Sonore Audiovisuel Ordinolingue Photographique

Paper Other:
Papier Autre:

Table with 4 columns: Item Number, Description, Dimension, and Date. Row 1: 59, Published scores (annotated): Emperor Waltzes (J. Strauss); Petite Suite (Debussy); Russian Sailor's Dance (Gliere); Symphony No. 31 (Mozart), 2 cm., c1907-c1934, n.d.



MUSIC DIVISION - ARCHIVE'S PRELIMINARY PROCESSING FORM
DIVISION DE LA MUSIQUE - BORDEREAU DE TRAITEMENT PRÉLIMINAIRE DES DOCUMENTS
D'ARCHIVES

Title of Fonds/Titre du fonds
ETHEL STARK

File Code of the Fonds (Accession Number)/Cote de fonds (Numéro d'acquisition)
MUS 242 (1995-47)

Box Number/Numéro de boîte 10
Dimension 5 cm.

Restrictions

Medium/Support
Recorded Sound Audiovisual Machine Readable Photographic
Enregistrement Sonore Audiovisuel Ordinolingue Photographique
Paper Other:
✓ Papier Autre:

Table with 4 empty columns and 3 rows.

Table with 3 columns: Date of/de description (Jan.10, 1995), Signature, Page 1 of/de 1

Table with 4 columns: FOLDER CHEMISE, DESCRIPTION, CM, DATE(S). Row 1: 69, Diploma and certificate., 2 items, 1927-1934



MUSIC DIVISION - ARCHIVE'S PRELIMINARY PROCESSING FORM
DIVISION DE LA MUSIQUE - BORDEREAU DE TRAITEMENT PRÉLIMINAIRE DES DOCUMENTS
D'ARCHIVES

Title of Fonds/Titre du fonds
ETHEL STARK

File Code of the Fonds (Accession Number)/Cote de fonds (Numéro d'acquisition)
MUS 242 (1995-47)

Box Number/Numéro de boîte Dimension
Map cabinet 1 item

Restrictions

Medium/Support

Recorded Sound Audiovisual Machine Readable Photographic
Enregistrement Sonore Audiovisuel Ordinolingue Photographique

Paper Other:
✓ Papier Autre:

Table with 4 columns and 10 rows, currently empty.

Table with 3 columns: Date of/de description (Jan.10, 1995), Signature, Page 1 of/de 1

Table with 4 columns: FOLDER CHEMISE, DESCRIPTION, CM, DATE(S). Row 1: 70, Drawing., 1 item, 1949